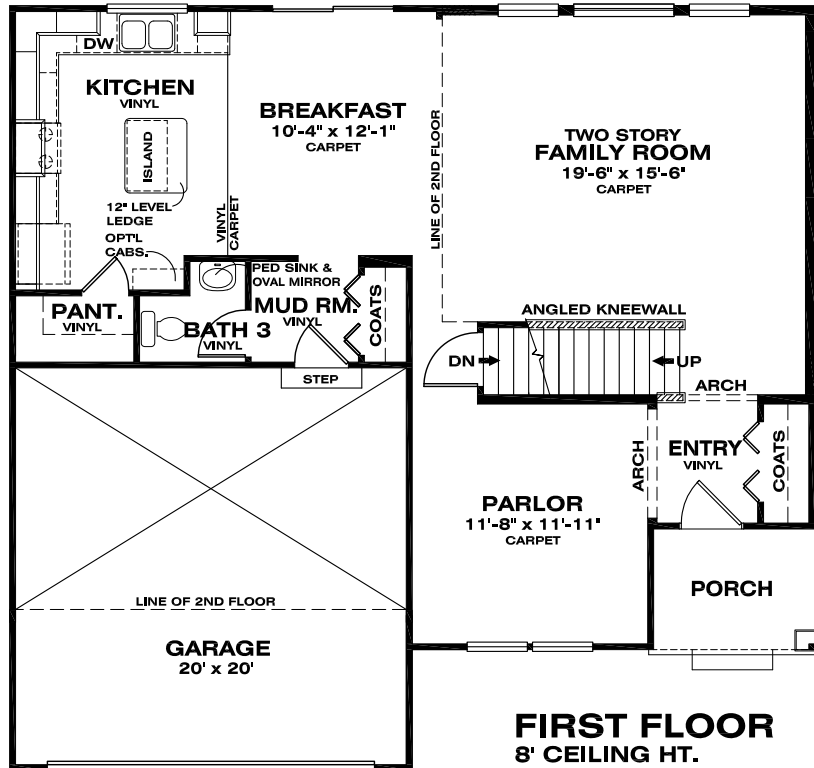
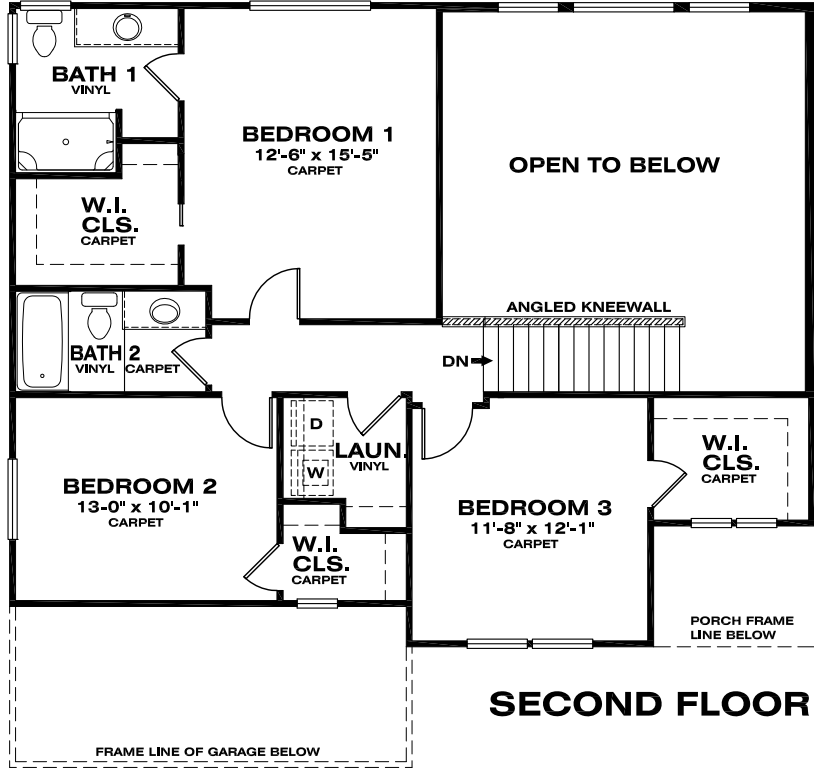


# STAFFORD FLOOR PLANS



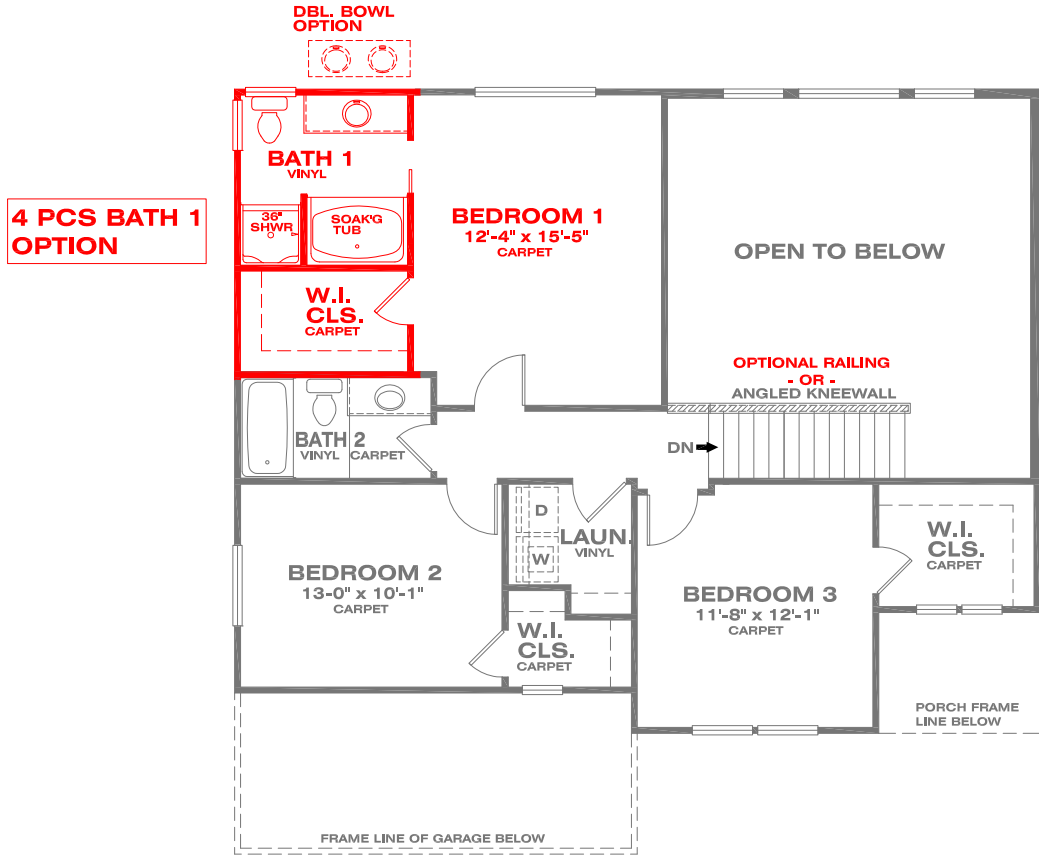
**FIRST FLOOR**  
8' CEILING HT.

**DIMENSIONS:**  
40'W x 38'D

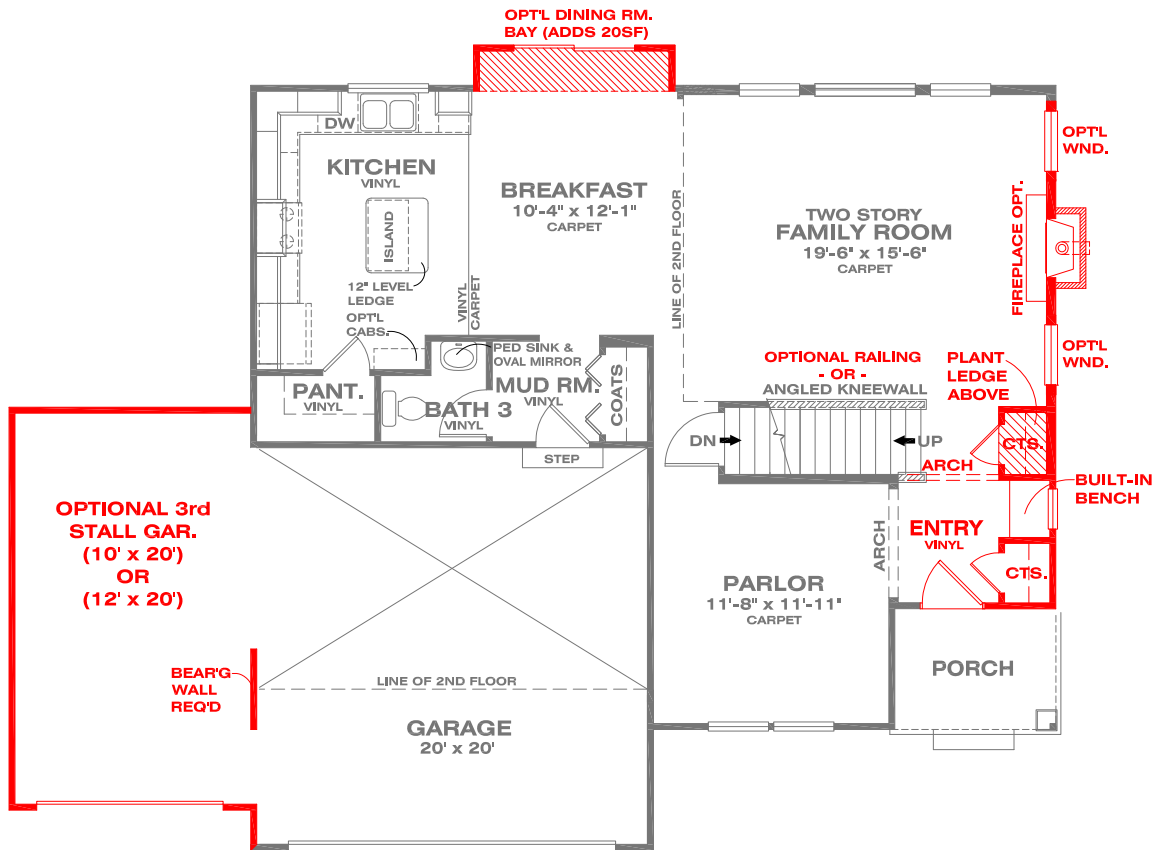
**1802 SF TOTAL**



# STAFFORD FLOOR PLANS (OPTIONS)



**4 PCS BATH 1 OPTION**



**OPTIONAL BENCH/CLS.**

